



Modern and comfortable - The TimeLine collection is completely customizable and crafted with precision.

The combination of wood and steel in this series of desks creates a simple interplay of lines. Select the model, colour, shape and size to create your ideal workspace.

Durability and high quality are priorities at Spell.

The table top is made of sustainable European solid wood.

The detachable panel has various useful functions and besides 'partial' privacy, it offers a memo function as well as acoustic benefits.

The wall panel is upholstered in elegant Kvadrat Steelcut Trio 3 fabric.

## Information

**Design:** Kim van Beers

**Material:** Solid Wood, powdercoated steel, upholstered screen

### Optional

**Electrification:** Qi wireless charging, cable guide

## Wood



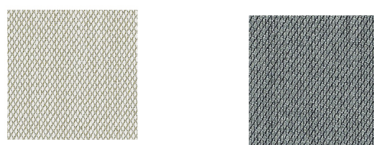
Oak	WhiteWash	Gray Wash	Black Wash
.00	.012	.020	.099

## Steel



Perl Beige	White	Black
.CH	.WH	.BL

## Upholstered Screen



Kvadrat Steelcut Trio 3	Kvadrat Steelcut Trio 3
-213-	-153-

## Dimensions (LXWxH)

**Product:** 108 x 47 x 44 cm / 42,52" x 18,50" x 17,32" inch

## Marks

